

COFFEE BOARD: BENGALURU
Daily Coffee Market Report Friday, September 02, 2016

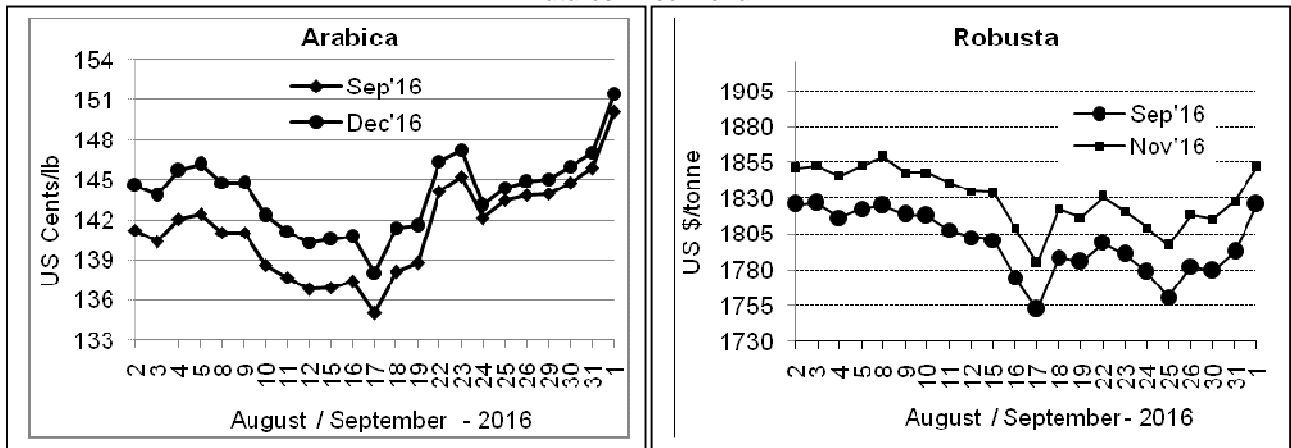
Futures Prices 01.09.2016					
ICE (New York)- Arabica- US cents / lb			LIFFE(London) – Robusta -US \$ / tonne and cents / lb in brackets (10 MT contract)		
Month	Price	Prev. Price	Month	Price	Prev. Price
Sep – 2016	150.10	145.90	Sep – 2016	1826 (82.83)	1793 (81.33)
Dec – 2016	151.40	147.05	Nov – 2016	1852 (84.01)	1828 (82.92)
Mar – 2017	154.50	150.20	Jan – 2017	1869 (84.78)	1847 (83.78)

ICO Group Indicator price on 31.08.2016 and previous price in brackets

Other Mild Arabica		Robusta	
US Cents/lb	Rs/kg	US Cents/lb	Rs/kg
171.84 (170.55)	253.63 (251.73)	91.36 (91.08)	134.85 (134.43)

Exchange Rate Rs/ US \$
66.95

Futures Price Trend



Market Analysis

ICE Arabica coffee futures rallied nearly 4 percent to a seven-week high on Thursday, buoyed by an improving technical outlook and concerns about early flowering of crops in top producer Brazil. ICE December arabica coffee futures settled up 4.35 cent, or 3 percent, at \$1.514 per lb. Robusta November coffee futures settled up \$24, or 1.3 percent, at \$1,852 per tonne.

Differentials:	Ar. Plant. A NY +0 to +5	Ar.Chy.AB NY -30 to -35	Rob.Pmt.AB LIFFE +425 to +500	Rob.Chy.AB LIFFE +180 to +200
----------------	-----------------------------	----------------------------	----------------------------------	----------------------------------

ICTA Auction Prices Rs/Kg as on 25.08.2016 (2015-16 season crop)

Grade	MNEB	AA	PB	A	AB	B	C	BBB
Arabica Plantation	---	---	---	---	---	---	---	---
Arabica Cherry	---	---	141.00	---	---	---	---	---
	RKR	A	PB	AA	AB	B	C	BBB
Robusta Parchment	---	---	---	---	---	---	---	---
Robusta Cherry	---	---	---	---	135.00	---	127.00	115.00

Raw Coffee Price (Karnataka) as on 01.09.2016 in Rs/50 kg

Ar.Pmt	Ar.Chy	Rob.Pmt	Rob.Chy
8025 - 8300	3650 - 3800	5650 - 5850	3000 - 3300

Export update: From 1st January 2016 to 01st September 2016 (in metric tonnes)

	INDIAN COFFEE	Ar.Pmt	Ar.Chy	Rob.Pmt	Rob.Chy	Roasted seeds	R & G	Instant	Total
1	Provisional exports (Indian coffee)	33714	8850	20930	126960	38	144	16786	207422
2	Provisional exports corresponding period last year	26694	8409	26515	97864	26	218	21932	181658
3	Provisional re-exports	0	0	0	0	0	91	51834	51925
4	Provisional re-exports corresponding period last year	0	0	0	0	119	227	40227	40573
5	Total provisional exports (1+3)	33714	8850	20930	126960	38	234	68620	259347
6	Total provisional exports corresponding period last year (2+4)	26694	8409	26515	97864	145	445	62159	222231

Disclaimer: The Board neither guarantees the accuracy of the information nor accept any liability whatsoever for any direct or consequential loss arising from the use of this report