

COFFEE BOARD: BENGALURU
Daily Coffee Market Report Friday, May 20, 2016

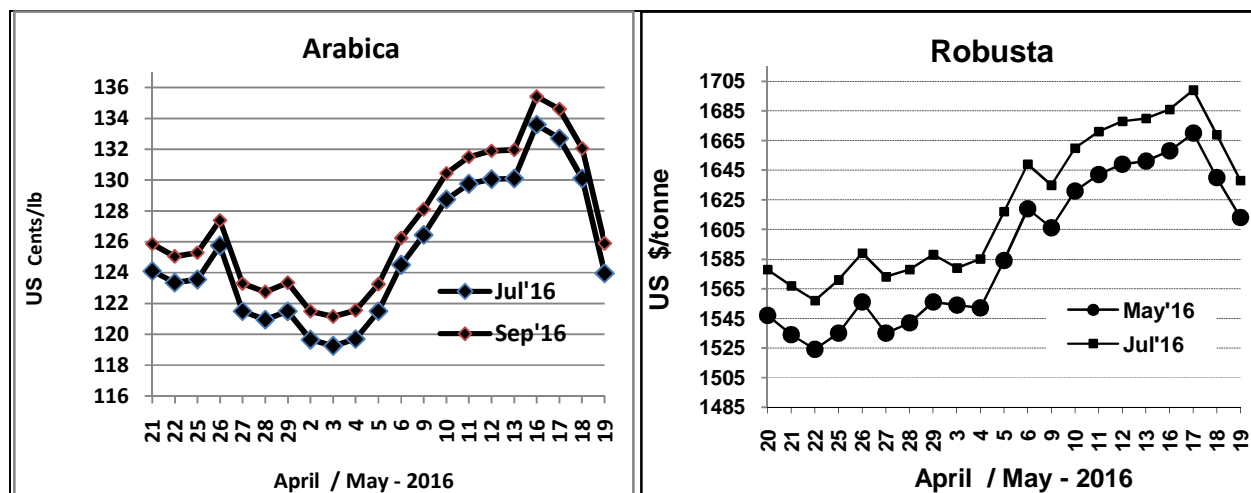
Futures Prices 19.05.2016					
ICE (New York)- Arabica- US cents / lb			LIFFE(London) – Robusta -US \$ / tonne and cents / lb in brackets (10 MT contract)		
Month	Price	Prev. Price	Month	Price	Prev. Price
July – 2016	123.95	129.30	May – 2016	1613 (73.16)	1670 (75.75)
Sep – 2016	125.90	130.10	July – 2016	1638 (74.30)	1699 (77.07)
Dec – 2016	128.70	132.05	Sep – 2016	1654 (75.02)	1714 (77.75)

ICO Group Indicator price on 19.05.2016 and previous price in brackets

Other Mild Arabica		Robusta	
US Cents/lb	Rs/kg	US Cents/lb	Rs/kg
153.61 (161.68)	228.29 (238.50)	83.77 (86.11)	124.49 (127.02)

Exchange Rate Rs/ US \$
67.41

Futures Price Trend



Market Analysis

Coffee prices plunged Thursday, extending its run of losses into a third-straight session, as the market was weighed down by the outlook for a record crop in Brazil. It was the biggest percentage decline for coffee since October. ICE July arabica coffee futures settled down 6.15 cents at \$1.2395 a pound. July robusta coffee future settled down \$27 at \$1,613 per tonne.

Differentials:	Ar. Plant. A NY +18 to +20	Ar.Chy.AB NY –25 to –30	Rob.Pmt.AB LIFFE +650 to +700	Rob.Chy.AB LIFFE +160 to +180
----------------	-------------------------------	----------------------------	----------------------------------	----------------------------------

ICTA Auction Prices Rs/Kg as on 12.05.2016 (2015-16 season crop)

Grade	MNEB	AA	PB	A	AB	B	C	BBB
Arabica Plantation	---	242.00	184.50	210.00	---	186.50	148.80	109.00
Arabica Cherry	---	---	130.50	--	137.50	---	111.50	104.26
	RKR	A	PB	AA	AB	B	C	BBB
Robusta Parchment	---	---	140.00	150.00	147.50	---	131.50	104.26
Robusta Cherry	---	---	114.50	---	116.00	---	110.50	105.00

Raw Coffee Price (Karnataka) as on 20.05.2016 in Rs/50 kg

Ar.Pmt	Ar.Chy	Rob.Pmt	Rob.Chy
7760 - 8000	3350 - 3450	5710 - 5900	2750 - 2850

Export update: From 1st January 2016 to 19th May 2016 (in metric tonnes)

	INDIAN COFFEE	Ar.Pmt	Ar.Chy	Rob.Pmt	Rob.Chy	Roasted seeds	R & G	Instant	Total
1	Provisional exports (Indian coffee)	23730	6275	10961	76003	17	79	8735	125799
2	Provisional exports corresponding period last year	18822	6619	15104	57429	12	123	7407	105517
3	Provisional re-exports	0	0	0	0	0	19	31256	31275
4	Provisional re-exports corresponding period last year	0	0	0	0	42	84	26914	27041
5	Total provisional exports (1+3)	23730	6275	10961	76003	17	98	39991	157075
6	Total provisional exports corresponding period last year (2+4)	18822	6619	15104	57429	54	207	34322	132558

Disclaimer: The Board neither guarantees the accuracy of the information nor accept any liability whatsoever for any direct or consequential loss arising from the use of this report