

COFFEE BOARD: BENGALURU
Daily Coffee Market Report Friday, September 23, 2016

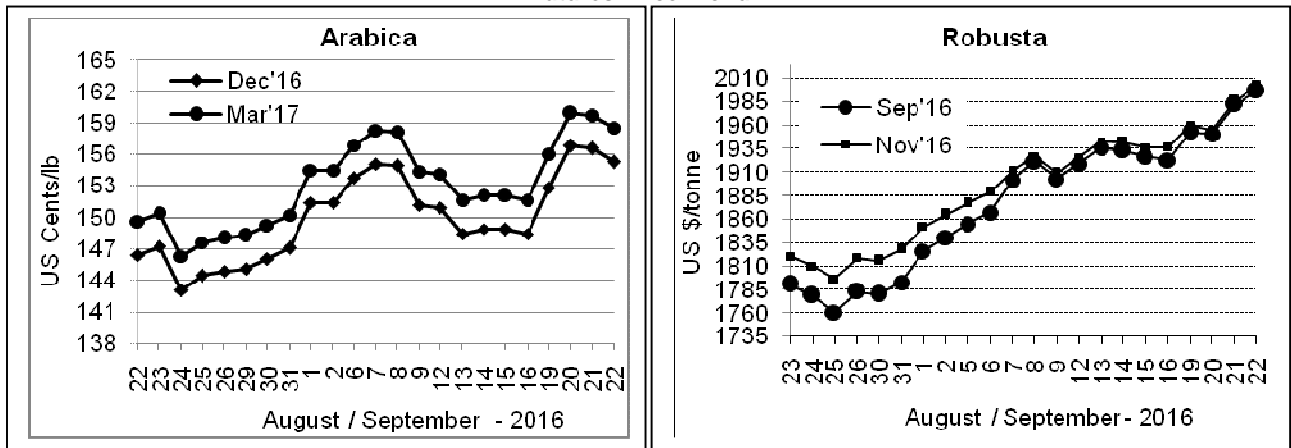
Futures Prices 22.09.2016					
ICE (New York)- Arabica- US cents / lb			LIFFE(London) – Robusta -US \$ / tonne and cents / lb in brackets (10 MT contract)		
Month	Price	Prev. Price	Month	Price	Prev. Price
Dec – 2016	155.25	156.55	Sep – 2016	1997 (90.58)	1982 (89.90)
Mar – 2017	158.50	159.75	Nov – 2016	2002 (90.81)	1986 (90.08)
May – 2017	160.30	161.50	Jan – 2017	2023 (91.76)	2007 (91.04)

ICO Group Indicator price on 21.09.2016 and previous price in brackets

Other Mild Arabica		Robusta	
US Cents/lb	Rs/kg	US Cents/lb	Rs/kg
180.24 (179.91)	265.64 (265.98)	98.73 (97.46)	145.51 (144.09)

Exchange Rate Rs/ US \$
66.85

Futures Price Trend



Market Analysis

ICE December arabica coffee futures settled down 1.3 cent, or 0.8 percent, at \$1.5525 per lb, after climbing to \$1.641, also the highest since February 2015. This volatile turnaround marked a potentially bearish technical pattern, soaring above the prior session's high and then closing before its low, as they broke a three-day streak higher. Robusta coffee rose to a 19-month high as traders focused on supply concerns in top producers Brazil and Vietnam. November robusta coffee futures settled up \$16, or 0.8 percent, at \$2,002 per tonne, after hitting \$2,028, the highest level for the benchmark second position since February 2015.

Differentials:	Ar. Plant. A NY +0 to +5	Ar.Chy.AB NY –30 to –35	Rob.Pmt.AB LIFFE +425 to +500	Rob.Chy.AB LIFFE +180 to +200
----------------	-----------------------------	----------------------------	----------------------------------	----------------------------------

ICTA Auction Prices Rs/Kg as on 08.09.2016 (2015-16 season crop)

Grade	MNEB	AA	PB	A	AB	B	C	BBB
Arabica Plantation	---	---	225.00	---	---	---	---	---
Arabica Cherry	---	---	151.50	---	152.00	---	125.00	115.00
	RKR	A	PB	AA	AB	B	C	BBB
Robusta Parchment	---	---	---	---	---	---	---	115.00
Robusta Cherry	---	---	---	---	140.00	---	---	---

Raw Coffee Price (Karnataka) as on 22.09.2016 in Rs/50 kg

Ar.Pmt	Ar.Chy	Rob.Pmt	Rob.Chy
8375 - 8650	3700 - 4150	5750 - 6050	3200 - 3425

Export update: From 1st January 2016 to 22nd September 2016 (in metric tonnes)

	INDIAN COFFEE	Ar.Pmt	Ar.Chy	Rob.Pmt	Rob.Chy	Roasted seeds	R & G	Instant	Total
1	Provisional exports (Indian coffee)	34984	9174	22986	135670	40	158	18310	221321
2	Provisional exports corresponding period last year	27789	8571	28094	103892	28	228	22708	191310
3	Provisional re-exports	0	0	0	0	0	91	55007	55097
4	Provisional re-exports corresponding period last year	0	0	0	0	119	248	45015	45381
5	Total provisional exports (1+3)	34984	9174	22986	135670	40	248	73316	276419
6	Total provisional exports corresponding period last year (2+4)	27789	8571	28094	103892	147	476	67723	236691

Disclaimer: The Board neither guarantees the accuracy of the information nor accept any liability whatsoever for any direct or consequential loss arising from the use of this report